



**K-STATE**  
Research and Extension

MAY, 2025  
[www.maraisdescygnets.ksu.edu](http://www.maraisdescygnets.ksu.edu)

## INSIDE THIS ISSUE

News & Notes - Pg 2-3  
Calendar - Pg 4  
Adv. Training - Pg 5-6  
Plant sale update - Pg 7-8  
Short-term projects - Pg 14

## ADVISORY BOARD

Chairman-Janette Everhart  
Vice Chair - Carol Vandenberg  
Secretary - Helen Kloepper  
Treasurer - Lynn Campbell  
Members at Large:  
Stephanie Myers  
Susan Rodgers  
Rena Tedrow

## WORK DAYS

**MiCo Courthouse Garden**  
Wednesday's, 8a - 10a

**Trial Garden/Cut flower Garden**  
Tuesday's, 8a

**LaCygne Community Garden**  
Wed and/or Fri 9a - noon

**Linn Co. Courthouse Garden**  
Contact Monica Chapman-  
Pickett or Theresa Barr

**DAYS AND TIMES ARE SUBJECT  
TO CHANGE**

## What's Growing On.....

in the world of the Marais des Cygne Extension Master Gardeners

Paola Office: 913 N Pearl (Old KC Road), Paola, KS 66071 ~ 913-294-4306

Mound City Office: 115 S 6th St., Mound City, KS 66056 ~ 913-795-2829

## One project down and planning for the next....

**Rena Tedrow**

As recently reported at the recent board meeting by the Plant Sale Committee (Lenora, Sue and Lynn) the sale went extreeeemely well. More detailed information can be found on page 7.

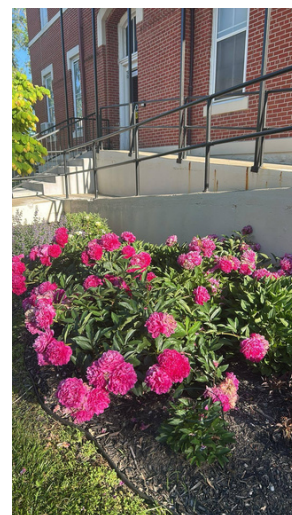
We are not even remotely close to slowing down. Short-term projects were completed - you will find photos of recent projects on page 9. Thank you to those who volunteered their time with them.

The gardens are starting to ramp up with their flowers. Monica Chapman-Pickett shares a flower shot from the south entrance at the Linn County Courthouse Garden.

Work will begin at the 'Kitchen Garden' soon. After the 2Q meeting, some of the Rookie members took seeds home to start. Hopefully, some of you got seeds to germinate. I was not so lucky, but I will have a few tomato and jalapeno pepper plants to plant - if they survived this recent storm. A workday will be scheduled soon for adding compost, laying cardboard and straw as well as planting. Produce will continue to be donated to a few local food pantries.

Lastly, the Fall Garden tour Committee has been diligently working on plans. A meeting is scheduled for June. You will find information for this under 'News and Notes.'

Which reminds me...I have to take a look at the flyer information asap.. After I get the newsletter finished, of course 😊



**Committees****Courthouse Garden**

Phyllis Benedict

**Trial Garden**Dennise Fink-Morse,  
Chet McLaughlin, Shirley New,**KSU Extension Office Garden**

Deb Kitchell

**Linn County Courthouse Garden**Theresa Barr,  
Monica Chapman-Pickett**Advanced Training**Stacey Campbell &  
Stephanie Myers**Awards Banquet**Donna Cook, Betsy Hasselquist,  
Susan Thompson**Symposium - 2024**

Janette Everhart

**Plant Sale**Sue Burns, Lynn Campbell,  
Lenora Larson**Garden Tour (2025)**

Audrey Gabel, Susan Rodgers

**Seeds for Kids**Betsy Hasselquist &  
Helen Kloepper**Miami County Fair**Dennise Fink-Morse, Hort. Supt.  
Betsy Hasselquist, Seeds4Kids  
Supt.  
Bill Vandeberg, Flori. Supt.**New Recruits/Mentors**

Rena Tedrow

**Other****Publicity**Lenora Larson  
Scott Schappell**Newspaper Articles**

Katelyn Barthol, Extension Agt.

**Social Media/newsletters**

Rena Tedrow, Editor

Articles, photos, etc. to be  
included in the monthly EMG  
Newsletter should be sent to Rena

at [mire1108@yahoo.com](mailto:mire1108@yahoo.com)

by the second Thurs. of each  
month.

**Kitchen Garden, 2025**

We are asking for two people to co-chair the kitchen garden with Chet. Chet and Denise have work and family obligations that demand their attention, so we would like two additional people to help Chet. As of the time the newsletter was being compiled, Diane Michuda has volunteered. We will be referring to the list of those who signed up as 'interested' to help with the Trial Garden. If you know you are on this list and would like to volunteer, please contact Rena.

The 'Kitchen Garden' is located in the Trial Garden space - it is not replacing the Trial Garden. Merely being utilized differently this year.

**Computer/Printer and Digitizing software Training**

Natalie Hartig will be offering some training May 27<sup>th</sup> at 6:30 on the new computer and printer as well as the new procedure to capture our old documents in our new digital repository. Please let Katelyn now if you plan to come.

**Hot Line is Active and awaiting your sign-up!**

Katelyn has sent an email with the link to schedule your time! Invite a fellow EMG friend or someone you want to know better! Here is the link to sign up:

<https://www.signupgenius.com/go/4090D49ABAC22A6F58-55094188-2025>

**By-Laws change proposal**

The proposal is pending the membership vote during the July general meeting. If you would like to review the proposed changes, contact Janette Everhart to get a copy. We will schedule a vote for our next general meeting.

**EMG On-line Reporting (Hours)**

Enter your hours now!! [https://vms.ksuemg.org/sec\\_Login/](https://vms.ksuemg.org/sec_Login/)

The board will be looking at entered hours quarterly. We will recognize the top hours contributors for the first half at our Q3 General meeting. We want to encourage you to get in the habit of entering hours more frequently! Please take a bit of time now to record the valuable time you spend supporting the MdC EMG Program. (Also, it will help Katelyn balance her time in reviewing our hours). It's all Good! Thanks for bringing plant joy to our community!

### **MdC EMG Vision Statement**

We are recognized as a welcoming, knowledgeable, focused gardening volunteer team. We grow, communicate with, and educate our community and ourselves. We build lasting connections and friendships.

### **Short-term projects**

Thanks to the short-term projects team for completing the many projects! Lots of plant love being shared! See page 9 to view photos.

### **Plant Sale**

Thank you for your time and talents during the Plant sale! Everyone worked so hard. The teamwork was awesome. Kudos to the Co-Chairs and Plant Ambassadors for your passion for plants and assisting our customers! Well done everyone!

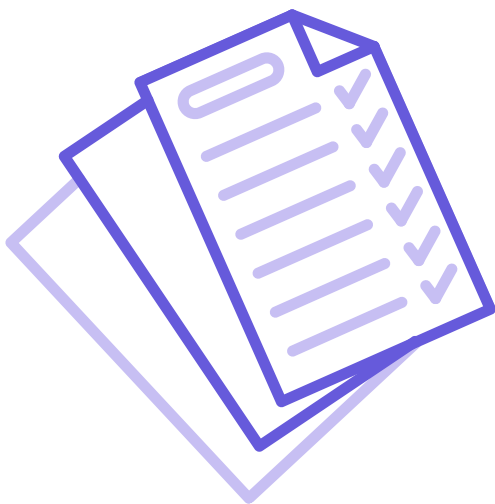
### **And....**

If you liked being inside for the sale, you will be very happy to know that Katelyn was able to reserve the bldg. for April 22-26, 2026! YIPPEE!

### **Reminder...**

Each January, Katelyn distributes a roster of our members. This list includes any changes to existing member information as well as the addition of the Rookie class members and their information.

Please make sure you refer to the list the first few times you email someone especially if their email address might have changed. Be sure to delete any old email addresses that show up so you don't send something to an incorrect email address.



- ▶ **EMG Computer and Digital records capture Training**  
May 27, 6:30p. RSVP to Katelyn if you will be attending.
- ▶ **Garden tour Committee Meeting**  
June 3, 1:00p at the Extension office.
- ▶ **Miami County Fair Superintendent Meeting**  
July 17<sup>th</sup> 7pm, Building 4 at the Miami County fairgrounds. Come if you are curious how it all works!
- ▶ **Next EMG Board meeting...**  
*June 10<sup>th</sup> at 9:30a via Zoom.* **All** members are welcome to attend! If you plan to attend, please let one of the board members or Katelyn know so the link can be distributed to you. . We would love to have you attend!
- ▶ **See the Advanced Training Calendar for details of upcoming training.**

### **AT Training, Solitary Bees**

Presented by MdC EMG, Nancy Kalman

June is a busy month but one thing not to miss is Nancy Kalman's presentation on solitary bees.

Behind that seasoned, quiet gardener is a wealth of information and stories! Nancy is a retired educator and microbiologist and has been a member of the EMG group since 2001. She has been a beekeeper for honeybees for a number of years and sold honey bears at local farmers' markets.

About a year ago Nancy built a bee hotel...no bee suit and no mask. No honey or hive.

Nancy will teach us how important solitary bees are for our crops and flowers.



## ADVANCED TRAINING SCHEDULE

### 2025 Marais des Cygnes Extension Master Gardener Advanced Training Calendar

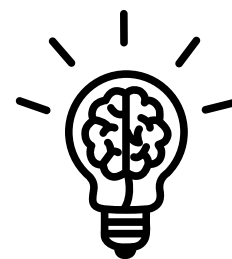
**Note: Additional trainings will be added throughout the year as they are scheduled**

MO	DAY	TIME	# HOURS	TOPIC	SPEAKER	LOCATION
Jun	3rd	Late afternoon	0	Spring Butterfly Garden visit	Lynn Fogle former JoCo EMG	Lynn Fogle's garden 15192 W. 335th St., Paola (Note: this may be a social event depending on educational content)
Jun	6/7	9a - 4p	5	MU Extension Garden Tour	Varied	Lee's Summit area. Tickets go on sale April 1 - \$20. <a href="https://mggkc.org/our-projects/garden-tour/">https://mggkc.org/our-projects/garden-tour/</a>
Jun	24	6-7p	1	Solitary Bees	Nancy Kalman See bio pg 4	Paola Extension office. 913 N. Pearl
Jun	27	10a	1	Garden design, plant choices and seasons	TBD	Ewing and Muriel Kauffman Memorial Garden 4800 Rockhill Rd. KCMO
Jul	TBD	TBD	1	TBD	TBD	Laura Conyers Smith Municipal Garden - Loose Park, KCMS
Aug	25-28	See website for schedule	1 hr. per speaker attended	International Master Gardener Conference	<a href="https://www.img2025.com">https://www.img2025.com</a>	Virtual only - see website for details. Online classes - must be registered for full event, not by class Early bird registration - \$185 After June 21 <sup>st</sup> - \$210
Mdc Training Hours			Other training hours		Red text denotes new training added or updated info.	

### Ideas for AT?

Do you have ideas for Advanced Training (AT) classes for this year? Contact Stephanie Myers or Stacie Campbell with your suggestion(s).

Share  
your  
Thoughts







The **K-State Garden Hour**, is at 12:00 PM on the 1st Wed. of each month. **You must register if this will be your first time joining the webinar.** <https://hnr.k-state.edu/extension/consumer-horticulture/garden-hour/>.

June 4 - Native & Ornamental Grasses of Kansas ~ July 2 - Cutting-edge Efforts in Kansas Demo Garden

Past recordings are available on the website.

**Deep Roots Native Plant Webinars - Lunch and Learn**, 12p - every 1st Thursday of the month.

**Native Plants at Noon**, 12:00p - every 3rd Thursday.

June 5 - Ernie Miller Nature Center & Hiking Trails w/JoCo Parks & Rec District

June 19 - Welcoming Nature Home with Deep Roots Nature Advisors

Register for both webinars and tours at **deeproots.org** (past recordings available on website)



## Our Best Sale Ever!!!

**Lenor Larson, Co-chair**

The numbers prove our success. We sold 87% of the plants that Vinland delivered! Amy was THRILLED!! The previous highest total gross revenue was \$48,000 in 2023. (We were almost rained out in 2024 but still achieved \$39,752.) Lynn deposited \$56,594 - our gross collected cash! This figure includes collected KS sales tax--to be subtracted and remitted to the State. The greatest expense is the cost of the plants from Vinland, our long-time wholesale supplier. Our contract stipulates that Vinland receives 75% of the retail sale and we receive 25%. The Lynn's Treasurer's report will illustrate the expenses and final net profit.

Our reputation and history of exceptional plants from Vinland set the stage for another great Plant Sale. Within minutes of the door opening at 9a Thursday morning, we knew that our sale was a HUGE success. The plants were almost flying off the tables, a validation of months of planning and hard work.

This was not an accident because we implemented three innovations that I believe created this record-breaking Plant Sale.

- First was the move to the MiCo Fairgrounds and INDOOR SHOPPING. THANK YOU, KATELYN! Customers loved the comfort; we EMGs loved the convenience, and the plants told me how much they enjoyed not being at the mercy of Mother Nature's insults. The best news...Katelyn has secured our reservation for 2026. Hooray!
- The new strategy of "Plant Ambassadors" for each of the 14 Groups of plants proved amazing. Their dedication and knowledge helped customers to find the right plants and then buy more! They also implemented our new inventory system with a starting plant count Wednesday afternoon at delivery and a final "unsold returns to Vinland" after 3 pm on Saturday. (The truck was almost empty!) Plus it was so rewarding that many have already asked to be the PA for the same Group of plants next year!
- The new inventory system helped us track the movement of the plants from Vinland to our site and into the arms of eager customers. We now have hard data that will guide our plant selections and volume next year because we could have sold even more vegetables and herbs. The Vinland's veggie greenhouse was emptied with our Friday morning re-stocking delivery!



Saturday at 3 pm, Vinland picked up the few remaining orphans.

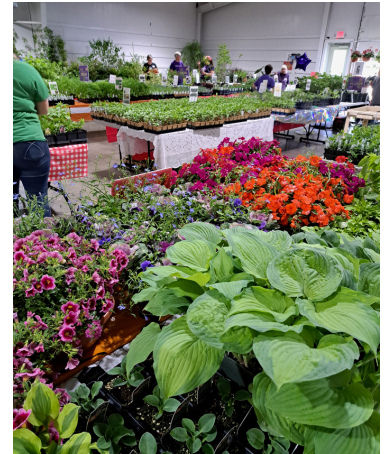


Photo ~ Patty Trull



89 tables were jam-packed by Wednesday evening - ready for the Thursday morning onslaught of eager customers. Photo ~ Scott Catton



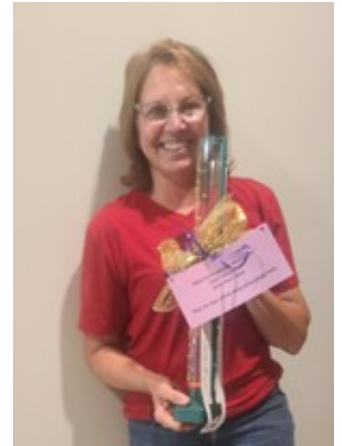
Saturday sale day.... Photo - Natalie Hartig



Other important factors contributing to our success included aggressive promotion with two months of a ½ page ad in the Kansas City Gardener and emailed fliers to other area EMG programs and garden clubs, plus weekly Facebook postings (Thanks Rena!). Lynn redesigned the tally sheet, doubling its size and creating more room for individual plant pricing, which helped minimize pricing errors. We conducted training for the Plant Ambassadors and for the volunteers, especially the cashiers and tally-takers. And we again had the Vinland PDF plant list that volunteers could download onto their phone and search to quickly answer customer questions about availability and price.

We are already planning for an even more exciting 2026 Plant Sale. Based on experience, there will be adjustments in the number of tables and plants. The inventory process will be refined and certainly we'll welcome back the Plant Ambassadors. As always, ALL SUGGESTIONS ARE WELCOME!

BTW, our most interesting plant request: an older gentleman asked Chet if he had "Sinsimilla" plants. None of us recognized that name so I dashed out to the parking lot so I could Google. Yep, it's a high potency female marijuana plant. We didn't have it, LOL!



Plant ambassador Krystal Barr won the coveted 'Rain God's' trophy. Krystal sold 95% of her ornamental perennials!!

### Additional photos from the EMG group....





### Tri-Ko, Osawatomie

Cyndi Wilson

Our morning at Tri-Ko... I received permission to use the photos for our newsletter. We helped 55 clients plant flowers of their color choice. It was very rewarding and there were many smiles and thank-you's from the group. The Tri-Ko staff commented on how much the group enjoyed the activity.



From L to R: Barb Shropshire, Patty Trull, Krystal Barr, Cyndi Wilson, Carol Vandenberg, Becky Thorpe, Bill Vandenberg



### Vintage Park, Paola ~ Meals on Wheels

Cyndi Wilson & Becky Thorpe

