



## K-STATE

Research and Extension

JUNE, 2025  
www.maraisdescygnets.ksu.edu

### INSIDE THIS ISSUE

News & Notes - Pg 2-3  
Calendar - Pg 4  
Adv. Training - Pg 5-6  
Garden Tour flyer - Pg 7  
Recruitment FB post - Pg 8

### ADVISORY BOARD

Chairman-Janette Everhart  
Vice Chair - Carol Vandenberg  
Secretary - Helen Kloepper  
Treasurer - Lynn Campbell  
Members at Large:  
Stephanie Myers  
Susan Rodgers  
Rena Tedrow

### WORK DAYS

**MiCo Courthouse Garden**  
Wednesday's, 8a - 10a

**Trial Garden/Cut flower Garden**  
Tuesday's, 8a

**LaCygne Community Garden**  
Wed and/or Fri 9a - noon

**Linn Co. Courthouse Garden**  
Tuesday's, 8-10a but contact  
Monica Chapman-Pickett or  
Theresa Barr

**DAYS AND TIMES ARE SUBJECT  
TO CHANGE**

## What's Growing On.....

in the world of the Marais des Cygne Extension Master Gardeners

Paola Office: 913 N Pearl (Old KC Road), Paola, KS 66071 ~ 913-294-4306

Mound City Office: 115 S 6th St., Mound City, KS 66056 ~ 913-795-2829

### Recruitment, a Garden Tour and Symposium... Oh My! Rena Tedrow

In the event you were unaware, the Kansas State webpage has changed its look. If you have saved bookmarks - such as the link to enter your hours - be sure to test them. Not all information related to the MdC Extension has been added yet. Some links work, such as the page for on-line reporting, others may not. Be sure to check your bookmarks and go take a look at the changes. These are the new link specific to our group: [Lawn & Garden](#) and [EMGs](#).

Recruitment has started for the fall classes. If you know of someone interested in becoming a master gardener, please ask any of the board members for the PDF to share or stop by the extension office to pick up some hard copies of the application. The applications are NOT online at this time.

Applications are due to the extension offices - in both Linn and Miam County - by July 31<sup>st</sup>. Applicants will be contacted to arrange interviews during August. Mentors will be paired with the new members.

Plans for the fall Garden Tour are also in the process of being finalized. The tour is September 5<sup>th</sup> and 6<sup>th</sup>. The flyer and ad are complete - you will find the flyer on page 7. The ad is set to go in the KCG Magazine in July. ***Please note: The link to the K-State page has been removed from the flyer as there is no content to link to, to date.***

The Garden Symposium, February 28<sup>th</sup>, 2026. Theme is 'The Natural Elements - Earth, Wind, Fire and Water.' Location is TBD at this time.

**Committees****Courthouse Garden**

Phyllis Benedict

**Trial Garden**Dennise Fink-Morse,  
Chet McLaughlin, Shirley New,**KSU Extension Office Garden**

Deb Kitchell

**Linn County Courthouse Garden**Theresa Barr,  
Monica Chapman-Pickett**Advanced Training**Stacey Campbell &  
Stephanie Myers**Awards Banquet**Donna Cook, Betsy Hasselquist,  
Susan Thompson**Symposium - 2024**

Janette Everhart

**Plant Sale**Sue Burns, Lynn Campbell,  
Lenora Larson**Garden Tour (2025)**

Audrey Gabel, Susan Rodgers

**Seeds for Kids**Betsy Hasselquist &  
Helen Kloepper**Miami County Fair**Dennise Fink-Morse, Hort. Supt.  
Betsy Hasselquist, Seeds4Kids  
Supt.  
Bill Vandeberg, Flori. Supt.**New Recruits/Mentors**

Rena Tedrow

**Other****Publicity**Lenora Larson  
Scott Schappell**Newspaper Articles**

Katelyn Barthol, Extension Agt.

**Social Media/newsletters**

Rena Tedrow, Editor

Articles, photos, etc. to be  
included in the monthly EMG  
Newsletter should be sent to Rena  
at [mire1108@yahoo.com](mailto:mire1108@yahoo.com)by the second Thurs. of each  
month.**Kitchen Garden, 2025**

Thank you to Diane Michuda for volunteering up to help Chet with the Kitchen Garden. Rena is also assisting when/if needed.

The garden is planted - according to Chet there are 73 tomato plants and 57 peppers, various varieties of both. Plans are to plant seeds soon - cucumbers, squash and other veggies. It will be a nice addition for the pantries.

If you would like to be added to the group text for notifications related to the Kitchen Garden, please contact Chet McLaughlin.

**Computer/Printer and Digitizing software Training**

Natalie Hartig will be doing a presentation related to the new computer and printer in addition to the procedure to scan documents during the Q3 meeting on July 8<sup>th</sup>.

**Hot Line is Active and awaiting your sign-up!**

Katelyn has sent emails with the link to schedule your time! Invite a fellow EMG friend or check the sign up to meet someone you'd like to know better! Here is the link to sign up: [SignupGenius](#)

**By-Laws change proposal - Your attendance to the 3Q meeting is needed for a vote**

The proposal is pending the membership vote during the July general meeting. If you would like to review the proposed changes, contact Janette Everhart to get a copy.

**EMG On-line Reporting (Hours)**

Have you entered your hours? During the Q3 meeting, recognition will be given to EMGs with the most hours to date. Be sure to enter your hours asap!! [EMG hour entry](#)

As a reminder, the board will be looking at entered hours quarterly. We will recognize the top hours contributors. We want to encourage you to get in the habit of entering hours more frequently! Please take a bit of time now to record the valuable time you spend supporting the MdC EMG Program. (Also, it will help Katelyn balance her time in reviewing our hours.)

### **MdC EMG Vision Statement**

We are recognized as a welcoming, knowledgeable, focused gardening volunteer team. We grow, communicate with, and educate our community and ourselves. We build lasting connections and friendships.

### **Recruitment and Mentors needed...**

It is that time of year and July is approaching fast!

Application to become an EMG can be obtained from any of the board members or Katelyn as a PDF, which you can share with friends/family, etc. You can also suggest potential applicants contact the Extension offices in either Linn County (913-795-2829) or Miami County (913-294-4306) for a copy.

Mentors and subs are needed for the applicants for the 2026 class. Classes begin in early September. Including myself, there are 3. If you are interested in mentoring a new member, please contact Rena asap.

On page 8 is the post put on the MdC FB page. The link was not working...it went unnoticed until the next day. Took a bit to figure out why, and there was a 'live and learn' moment. It all had to do with what types of product that hyperlinks can be 'used/saved' for in the program (Canva). The link was added as a comment. A new post will be made for next week - similar copy different view 😊

### **Office closure - Katelyn 'OOTO'....**

The Extension offices will be closed on June 19<sup>th</sup> (Juneteenth).

Katelyn will be out of the office June 26th thru July 3rd attending the National Association of County Agricultural Agents Annual Meeting & Professional Improvement Conference in Billings, Montana.

### **Miami County Fair...**

The online entry system is now live and open until July 1<sup>st</sup> for entry registration. Plan ahead for your entries - avoid delays at the fair by registering online.

The Fair book is available online as well as at the Paola Extension office.

### **K-State Extension...**

Beginning July 1, the word 'Research' will be dropped from the current use - our reference will be 'Kansas State Extension. Rebranding transition of everything will take place over time.

### **2025 Fall Garden Tour**

A 'September to Remember' is scheduled for September 5<sup>th</sup> and 6<sup>th</sup> to tour five Miami County gardens.

Ticket cost is \$20.00 per person and is good for both days. Tickets can be purchased at the Paola Extension office or during the tour at any of the garden sites during the event. Cash or check will be accepted.

The brochure will contain a map and the addresses for each garden along with a list of eateries that might interest patrons.

▶ **June 19th**

Extension offices will be closed for the Juneteenth holiday

▶ **July 1st, 9:30a at the Extension office**

Symposium Committee meeting. If you'd like to join, your help is appreciated.

▶ **July 8<sup>th</sup> - 4:00p, 6:00p, 7:00 at the LaCygne Library**

The Board Meeting will be held at 4p - anyone is welcome to attend. The potluck begins at 6p followed by the 3Q General Membership meeting. Hope you will all attend. More information to follow.

Location: LaCygne Library - Great Room, 209 N. Broadway. The Great Room is located on the north end of the building. There is parking on the north and west side of the building as well as across the street (adjacent to Peoples Telecom.) If you don't mind the walk, there is also parking on the south side of the building as well.

▶ **July 22, 23; July 26th - Fair set up/cleanup**

July 22<sup>nd</sup> & 23<sup>rd</sup> - fair setup. July 26<sup>th</sup> - clean up.

▶ **July 31<sup>st</sup> - EMG applications due**

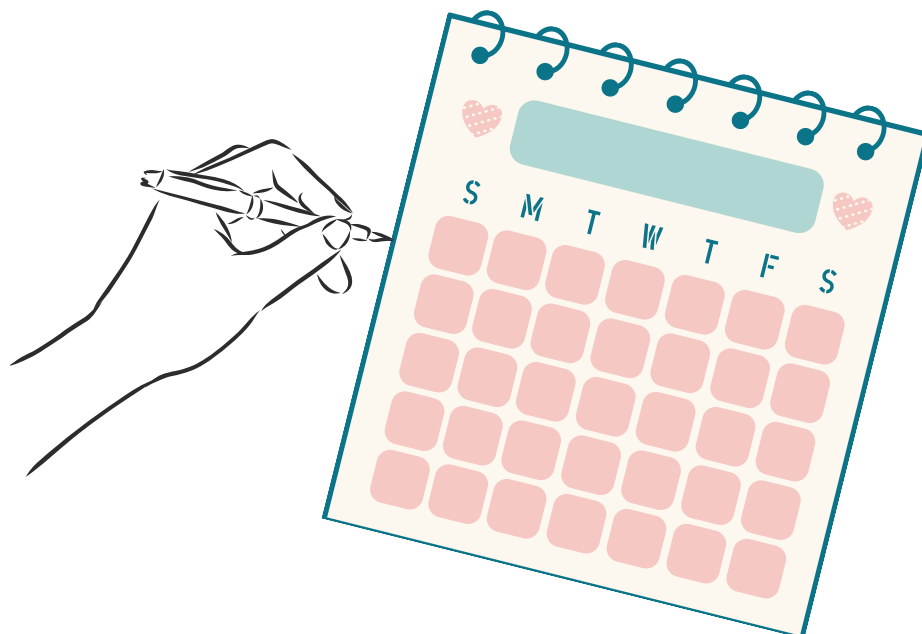
Applications should be submitted to both extension offices on or before July 31st.

▶ **August 26<sup>th</sup> and 27th**

Pre-garden tour for those who volunteer to work at the gardens (Fall Garden Tour). More information to follow.

▶ **September 5-6<sup>th</sup>**

Fall Garden Tour



# ADVANCED TRAINING SCHEDULE

## 2025 Marais des Cygnes Extension Master Gardener Advanced Training Calendar

**Note: Additional trainings will be added throughout the year as they are scheduled**

MO	DAY	TIME	# HOURS	TOPIC	SPEAKER	LOCATION
Jun	3rd	Late afternoon	0	Spring Butterfly Garden visit	Lynn Fogle former JoCo EMG	Lynn Fogle's garden 15192 W. 335th St., Paola (Note: this may be a social event depending on educational content)
Jun	6/7	9a - 4p	5	MU Extension Garden Tour	Varied	Lee's Summit area. Tickets go on sale April 1 - \$20. <a href="https://maggkc.org/our-projects/garden-tour/">https://maggkc.org/our-projects/garden-tour/</a>
Jun	24	6-7p	1	Solitary Bees	Nancy Kalman See bio pg 4	Paola Extension office. 913 N. Pearl
Jun	27	10a	1	Garden design, plant choices and seasons	TBD	Ewing and Muriel Kauffman Memorial Garden 4800 Rockhill Rd. KCMO
Jul	15	9:00	1		Laura Dickinson, KC Rose Society President	Laura Conyers Smith Municipal Garden - Loose Park, KCMS
Aug	25-28	See website for schedule	1 hr. per speaker attended	International Master Gardener Conference	<a href="https://www.img2025.com">https://www.img2025.com</a>	Virtual only - see website for details. Online classes - must be registered for full event, not by class Early bird registration - \$185 After June 21 <sup>st</sup> - \$210
Sept	13	9:30a - 3:15p	4	Plant Geek Saturday 1) Grow Something Different 2) Conifers & Other Woody Wonders 3) Clematis Myths & Truths	1) Steve Owens, Bustani Plant Farm (Stillwell OK) 2) Peter Lowe, Dawes Arboret., Columbus OH 3) Deborah Hardwick, Clematis expert	Rockhurst University, St. Ignatius Science Center, Rm 115 (54 <sup>th</sup> St & Troost entrance) Fee \$99 incl. a.m. coffee & lunch <a href="#">Register</a>
MdC Training Hours			Other training hours		Red text denotes new training added or updated info.	

**Ideas for AT?**

Do you have ideas for Advanced Training (AT) classes for this year? Contact Stephanie Myers or Stacie Campbell with your suggestion(s).

**Share  
your  
Thoughts**





The **K-State Garden Hour**, is at 12:00 PM on the 1st Wed. of each month. **You must register if this will be your first time joining the webinar.** <https://hnr.k-state.edu/extension/consumer-horticulture/garden-hour/>.

July 2 - Cutting-edge Efforts in Kansas Demo Garden ~ Aug 6 - Innovations in Horticulture Research at K-State  
Past recordings are available on the website.

**Deep Roots Native Plant Webinars - Lunch and Learn**, 12p - every 1st Thursday of the month.

**Native Plants at Noon**, 12:00p - every 3rd Thursday.

June 19 - Welcoming Nature Home with Deep Roots Nature Advisors

Register for both webinars and tours at [deeproots.org](https://www.deeproots.org) (past recordings available on website)



# 2025 Miami County Fall Garden Tour

## *A September to Remember*

Presented by the Marais des Cygnes Extension District Master Gardeners

**Friday and Saturday, September 5<sup>th</sup> & 6<sup>th</sup>, 9 a.m. - 5 p.m.**

**Tickets: \$20** (cash or check only) - valid for both days

### **Enjoy unique gardens located in Miami County!**

This year's Garden Tour will showcase five diverse country gardens near Paola and Louisburg. The tour includes a certified butterfly/pollinator garden, a restored tall grass prairie, a high tunnel and raised herb/vegetable beds, an extensive cutting flower garden, and a garden featuring lush containers and country art.

- Tour will be held rain or shine
- Start your tour at any garden
- No pets or strollers
- Sign up for gift drawings!
- Vendors' products for sale at each garden



SCAN FOR



GARDEN LOCATIONS

Tickets are available at each garden during the tour or at the Marais des Cygnes Extension District - Paola Office, 913 N. Pearl, Suite #1, Paola, KS 66071. More information will be available on [www.facebook.com/mdcemg](https://www.facebook.com/mdcemg) or call the Paola Extension Office at 913-294-4306.

**K-STATE**  
Research and Extension

**Master Gardener**  
**Marais des Cygnes District**



# Interested in *Gardening?*

Want to find your like-minded people or group?

Live in Miami or Linn County, KS?

Then the Marais des Cygnes District Extension Master Gardener (MdC EMG) might interest you. Visit the EMG page on the K-State site for more information: [EMG PROGRAM](#)

**Contact the Miami Co. Extension office in Paola at 913-294-4306 or the Linn Co. Extension in Mound City at 913-795-2829 for an application.**

**Submit your application to either Extension office on or before July 31st.**

